

Advancer Series Semi-Automated Wet Processing Systems



Advancer Gemini (Dual Robot)



Advancer Classic



Advancer Micro (Narrow)

Small Footprint, Precise Control

MEI Advancer Series wet processing systems are highly configurable, **semi-automated**, modular, front-back, side mount robotic wet stations.

Production Ready

High Performance

Low Cost Ownership

- Front-back side mount robot
- Bulk chemical ready
- Chemical spiking and in-tank blending
- Quick dump rinse

Versatile

Multiple Models

Optimum Performance

- Multiple clean, etch and strip applications
- 3 core platforms with 1-6 tanks
- Acid and solvent process
- Single or dual robot options
- 100mm to 200mm

Performance and Yield with IDX Flexware

- Flexible
- Configurable
- Precise
- SECS/GEM compliant
- Touch-screen interface

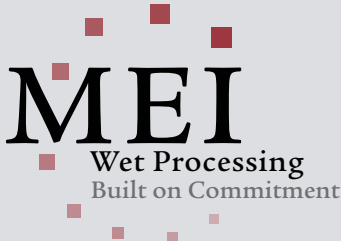
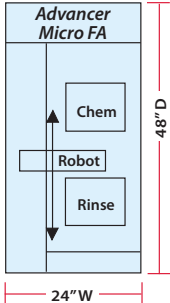
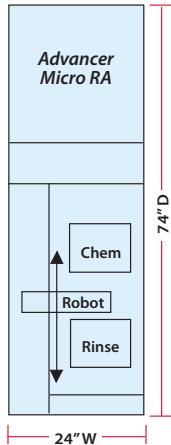
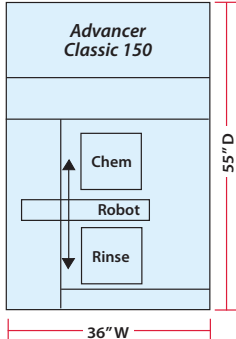
Designed for: Productivity ■ Safety ■ Reliability ■ Configurability ■ Low Cost ■ Maintenance Friendly

Applications



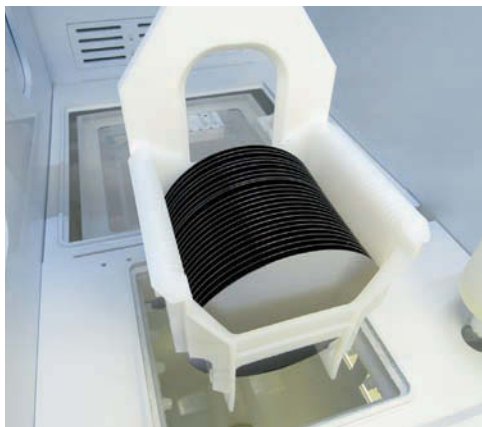
- HF or BOE Etch
- SC1 (Megasonic)
- SC2
- Oxide Etch
- Resist Strip
- Nitride Etch
- BOEL Solvents
- Advanced MLO
- InGap Etch

ADVANCER: Semi-Automated Wet Processing Systems

	Advancer Micro		Advancer
	Micro FA	Micro RA	Classic 150
 <p>Layout/Footprint</p>			
Max Static Tank Size	Single 200mm/ Single 150mm	Single 200mm/ Dual 150mm	Single 200mm/ Dual 150mm
Max Recirculated Tank Size	N/A	Single 150mm	Single 150mm/
Concurrent Lots Processed	1	1	1
Exhaust	Back	Top/Back	Top
Available Tank Lids	No	No	Yes
Available Filter Recirculation	No	Yes	Yes
Available Mega/Ultrasonics	No	No	Mega/Ultra
Maintenance Access	Front	Back	Back
Available Chemical Fill Type	Manual	Manual or Bulk	Manual, Fill-cup, Bulk
Available Spiking	No	Yes (Process dependent)	Yes (Process dependent)
General Specifications	Shell style: Single shell fully integrated design. Shell material: Choice of FM4910 (Halar, CPVC, PVDF), polypropylene or stainless steel.		



HMI – IDX Flexware Control Software



Narrow 60 cm (24-inch) Bay



Gemini Dual Robot

Advancer	Advancer Gemini	
Classic 200	Gemini-150	Gemini-200
Dual 200mm	Single 200mm/ Dual 150mm	Single 200mm/ Dual 150mm
Dual 200mm	Single 150mm	Single 150mm
1	2	2
Top	Top	Top
Yes	Yes	Yes
Yes	Yes	Yes
Mega/Ultra	Mega/Ultra	Mega/Ultra
Back	Back	Back
Manual, Fill-cup, Bulk	Manual or Bulk	Manual or Bulk
Yes	Yes	Yes
<p>Agitation: Standard</p> <p>Facilities: Bottom-back mounted plenum drains, top or back exhaust connections available, low exhaust requirements, shared facilities and electronics. UL compliant electrical components.</p>		

Custom Designed

- MEI partnership design process
- MEI application solutions
- Custom tanks, materials and configurations
- Solid works modeling
- Shared facilities and electronics
- Conforms to Semi-S2 standard

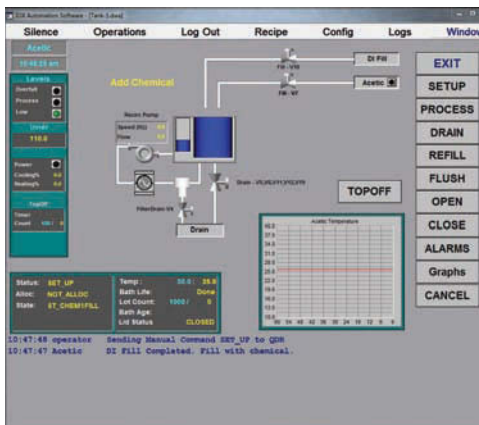
System Options

- Multiple tank options
- Static, recirc
- Megasonic, ultrasonic
- Tank level monitoring, pressure or optical
- Heater/chiller/in-line/blanket

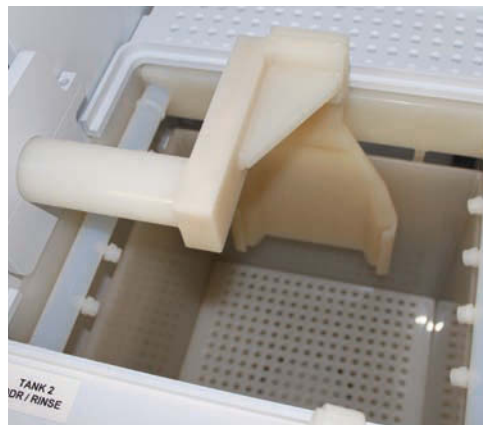


Superior Process Control

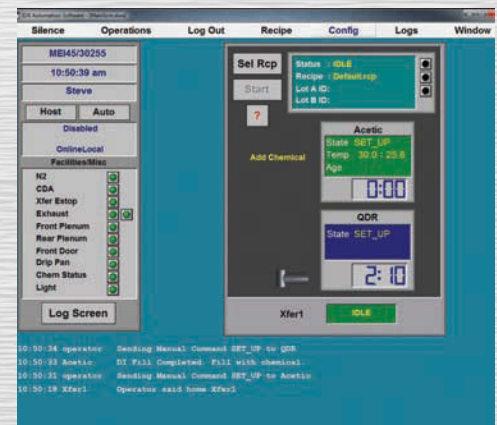
- SECS/GEM compliant
- Recipe editor
- Advanced process controls
- Unlimited user/permission levels
- Easy-to-use, touch-screen interface
- Error logging and data graphing
- Barcode reader compatibility
- Remote access compatible
- I/O monitor displays status



Easy Touch-screen Controls



Quick Dump Rinse Tank



ADVANCER: Semi-Automated Wet Processing Systems



Designed for Reliability

- Limited PM requirements
- Field proven reliability
- Semi-S2 compliance
- Durable “off the shelf” components
- Nitrogen purged electrical compartments
- Designed to provide MTBF > 1,500 hours – E1092

Low Cost of Ownership

- Extended tank life
- Improved process control
- Reduced DI water usage
- Reduced chemistry usage
- Easy installation

Designed for Safety

- Semi-S2 third party inspection optional
- FM4910 material standard
- S8 compliant
- UL/NFPA79/NEC
- CE optional

Typical Facility Table (Will change to specifications)

Description	Connection	Requirement
N2 Supply	3/8" Flaretek	45-60 PSI @ 2-7 SCFM
CDA Supply	1/2" Flaretek	60-80 PSI @ 12-20 SCFM
DI Water Input	1" Flaretek	45-60 PSI 10 GPM
Chem Bulkfill	1/2" Flaretek Dual Containment	N/A
Acid Waste	2" Male Pipe	N/A
Front Plenum Drain	2" Male Pipe	N/A
Back Plenum Drain	2" Male Pipe	N/A
Chilled Water Input	1/2" Flaretek	1 GPM 40-60 PSI (requires flow meter)
Chilled Water Input	1/2" Flaretek	N/A
DI Water Return	1/2" Flaretek	N/A
Plumbing Cabinet Exhaust	4" Duct	100-150 CFM @ 1" Static
Main Exhaust	10" Duct	250-500 CFM @ 1" Static
Electrical Supply	5-Wire 1 AWG	208V 3P 35A-75A FLA

All facility requirements are per module except electrical.



MEI's Award Winning Service and Support

MEI Global Field Service Team

- Final test and verification
- Standard one year parts and labor warranty
- Two year optional warranty
- Full field service support, on-site warranty coverage
- On-site training provided